

A photograph of a modern office interior. The space features glass-walled meeting rooms, ergonomic office chairs, and a large whiteboard with diagrams. The floor is made of light-colored wood. The ceiling has exposed ductwork and modern lighting fixtures. The overall aesthetic is clean, professional, and contemporary.

imagine
extraordinary

ES | Interiors

Interiors

Design Functionality & Versatility

Interior partition systems play a key role in creating functional and aesthetically appealing spaces. Strategically designed, these systems not only optimize space distribution but also enhance natural lighting, improve acoustics, and contribute to the overall architectural vision.

ES Interior Partition Systems

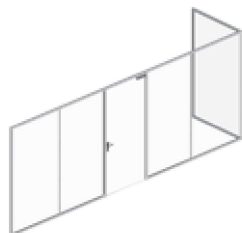
Welcome to a world of innovative interior solutions. Our partition systems are designed to transform spaces with style, efficiency, and versatility. They are fully customizable to meet the needs of any project, whether for offices, collaborative workspaces, or commercial environments.

Features:

- Single-source warranty: In-house aluminum and glass processing.
- Laminated glass by industry leader Tecnoglass.
- Sound insulation for enhanced acoustic performance.
- Modular designs for flexible and customizable layouts.
- Multiple paint finishes available to suit different aesthetics.
- Bent system capabilities for unique architectural designs.

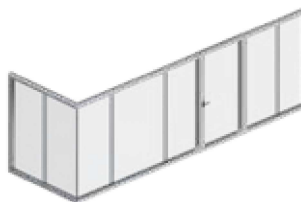


Partition Walls



ES-PW2030

Is a light and elegant internal Partition Wall, with transparent single-glass.



ES-PW3025

Is a hi-technological Partition Wall with elegant design, double glazing system conceived.

Interior Storefronts



ES-21

Is a swing door system, single or double acting operation. pre-assembled door leaf and anodized, painted or wood grain finishes available.



ES-4520

Is a storefront system, inside or outside glazed. Thermal break or non thermal options and anodized, painted or wood grain finishes available.

Closet Doors



ES-CD332

Is a hanging / sliding door system with an upper rail for closets and interior divisions.



ES-BF155

Folding door ideal for dividing interior spaces while maintaining aesthetics and performance.

Infinite & Versatility.



Enhanced Transparency

Our interior partition walls feature minimalist designs with flush or semi-offset profiles that create a sleek, modern aesthetic. The clean lines and seamless integration of glass emphasize transparency, providing open and bright spaces without sacrificing privacy.



Customizable Design Options

Our interior systems can be tailored to match any design concept. Available in various colors and textures, these partitions are perfect for commercial and residential projects seeking flexibility and style.



Aesthetic Appeal

With concealed drainage and no visible seams, our partitions blend effortlessly into any interior space. The sophisticated cubic design is ideal for modern architectural projects, enhancing the overall look of the room.



Sound Insulation

Designed with double-glazing and precision-engineered components, our partitions offer superior sound insulation. Whether it's creating private office spaces or quiet zones in commercial buildings, these systems ensure acoustic comfort.



Durability & Stability

Combining high-quality aluminum and advanced glazing technology ensures that our partition walls are lightweight and highly stable. These systems can accommodate large-scale glass elements, maintaining their structural integrity in high-traffic areas.



Secure and Reliable

For added peace of mind, these systems include burglar-resistant hardware. The sturdy connection between aluminum and plastic frames provides an extra layer of security while maintaining the sleek design.





ES-PW2030

Partition Wall

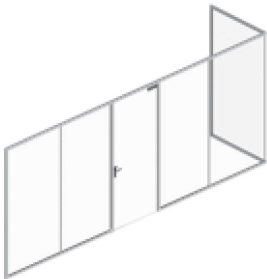
The ES-PW2030 stands as a luminous and versatile internal Partition Wall, graced by pristine single-glass exquisitely crafted. This embodiment of advanced technology and sophistication serves as an architectural canvas, poised to breathe life into any interior setting.

ES-PW2030

Partition Wall

Features:

- Height profile dimensions: 1 3/8".
- Width profile dimensions: 1 3/8".
- Wall weight:
(module L=3' x H=8'): 132,3 Lb (60Kg).
- Tolerance: ± 3/16".
- Glass adjustment with varies thickness of shims.

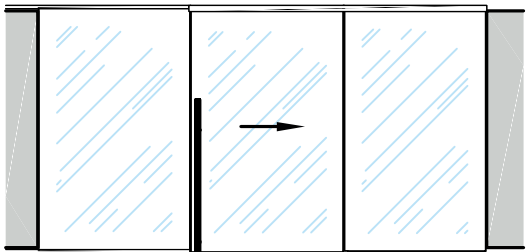


Performance & Highlights

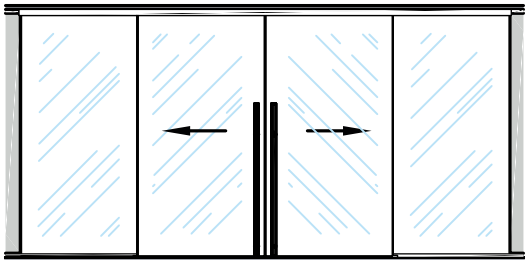
Glazing options	1/4"+0.03"+1/4" 1/2" 3/16"+0.03"+3/16" 3/8"
Aluminum	Black Anodized, Clear Anodized , Bronze Anodized. AAMA 2604 Bronze , AAMA 2604 Black
Sizes	Width: 60" Height: 120"
STC	33



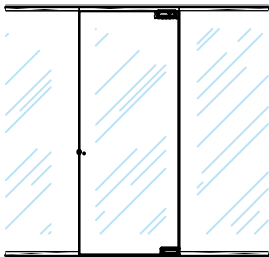
Details & Configurations



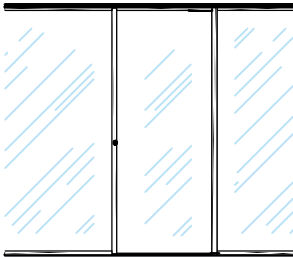
Single Sliding Door



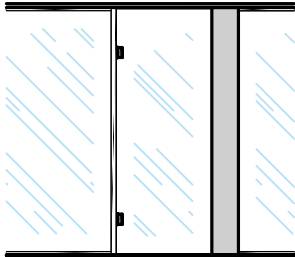
Double Sliding Door



Pivot



Hydraulic hinge fixing
on aluminum profile

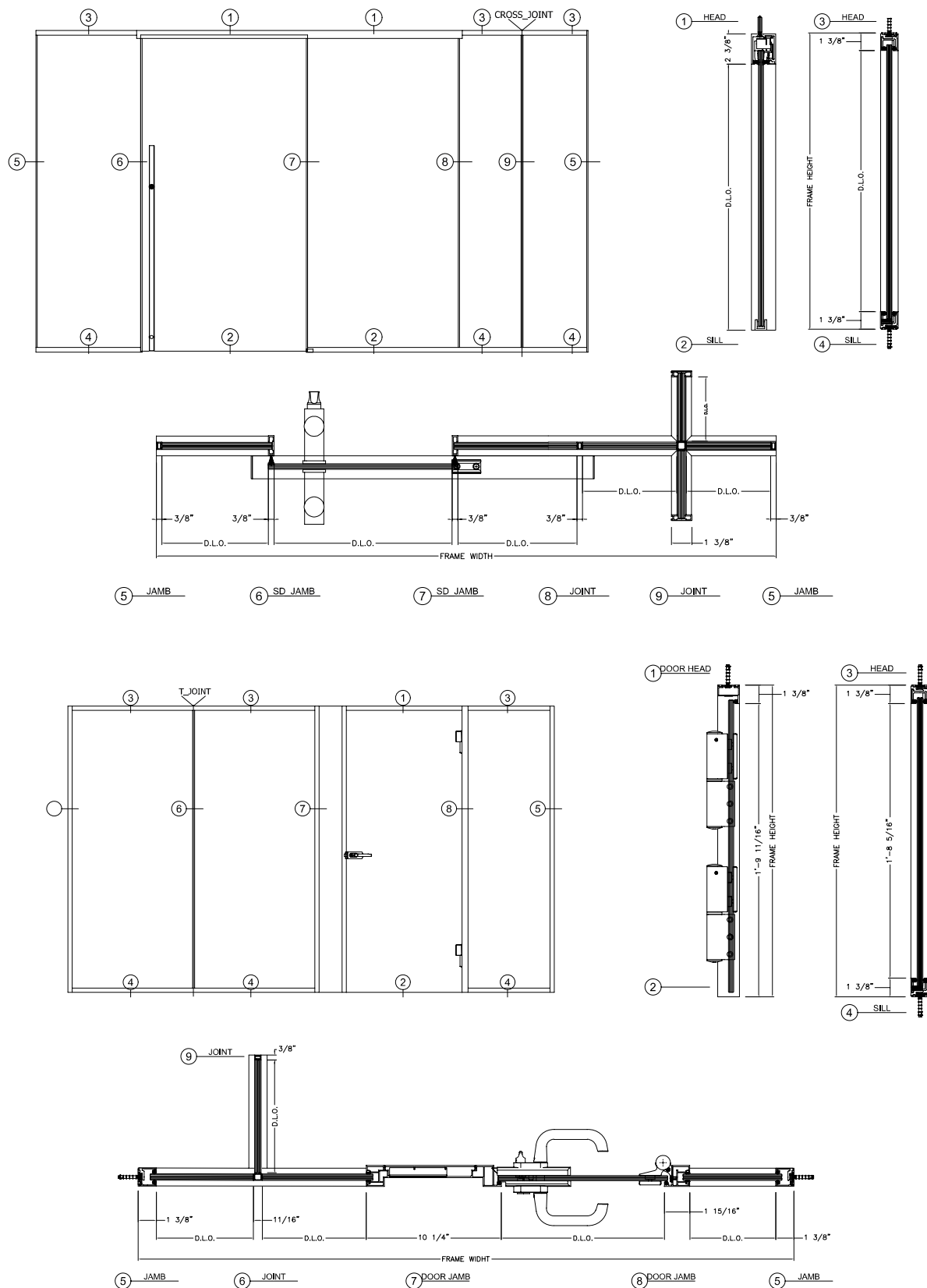


Technical unit

This data corresponds to the highest values obtained for some configurations. It can vary and may not apply to all.

ES-PW2030

Partition Wall



This data corresponds to the highest values obtained for some configurations. It can vary and may not apply to all.



ES-PW3025

Partition Wall

The ES-PW3025 is a hi-technological Partition Wall with elegant design. It is a double glazing system conceived, designed and built to achieve maximum comfort in all its forms: from visual to aesthetical and sound comfort.

ES-PW3025

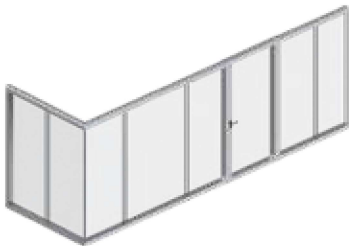
Partition Wall

Features:

- Profile Height: 2 1/2" & Width: 3 1/2".
- Wall weight: 264.6 Lb (120Kg).
- 90° Corners and "T" connections.
- Designed for: 7/16" & 9/16"

Laminated glass.

- Different sound insulation levels & anti seismic.
- Swing, sliding door and openable vent/door accommodation available.

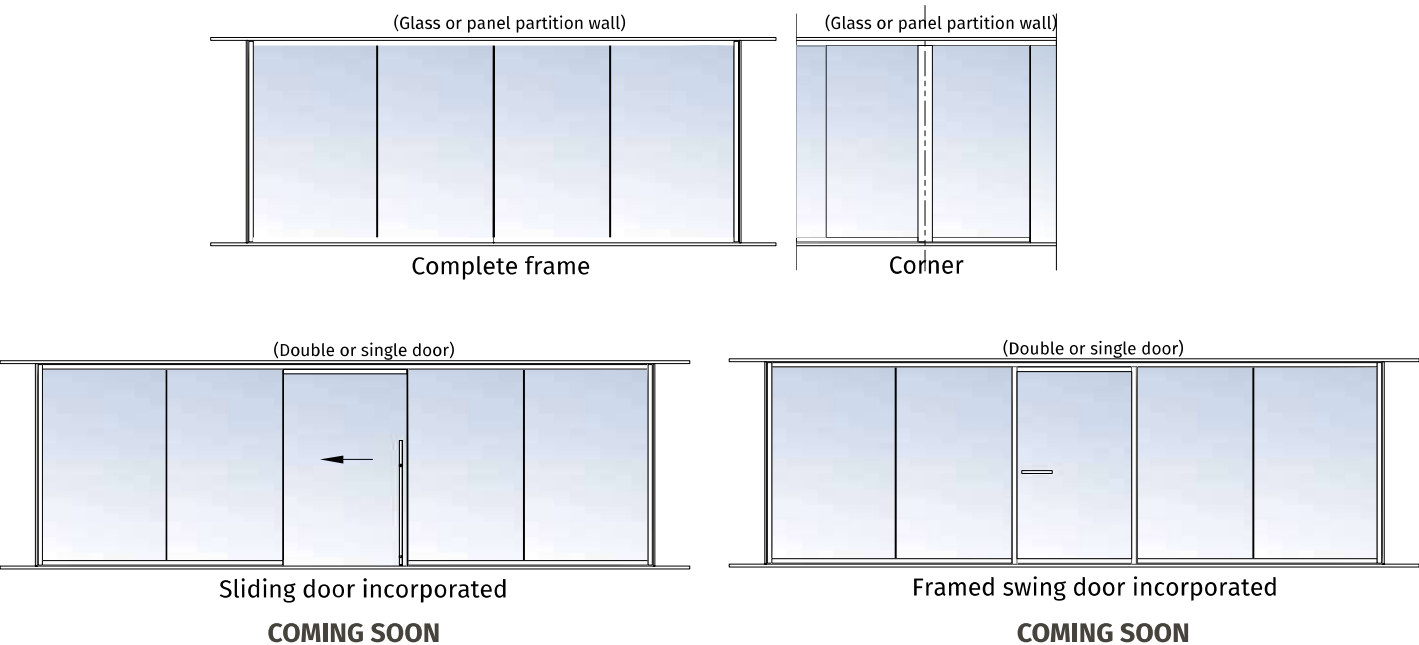


Performance & Highlights

Glazing options	G1: 3/16"+PVB+ 3/16" G2: 1/4"+PVB+1/4"
Aluminum	Black Anodized, Clear Anodized , Bronze Anodized. AAMA 2604 Bronze , AAMA 2604 Black
Sizes	Maximum sizes: Width: 60" Height: 125".
STC	41



Details & Configurations

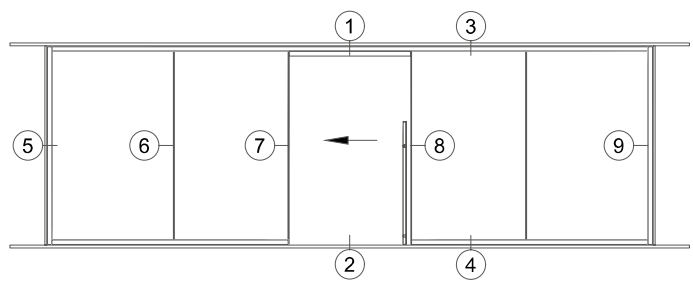


This data corresponds to the highest values obtained for some configurations. It can vary and may not apply to all.

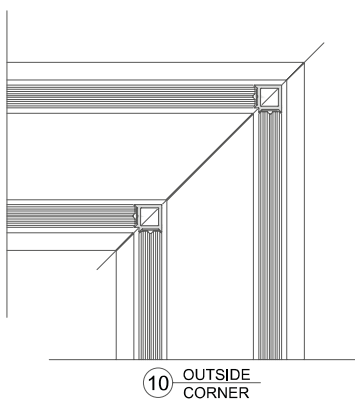
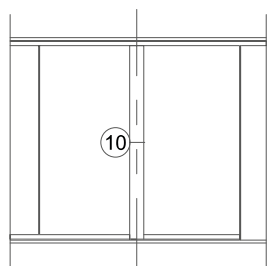
ES-PW3025

Partition Wall

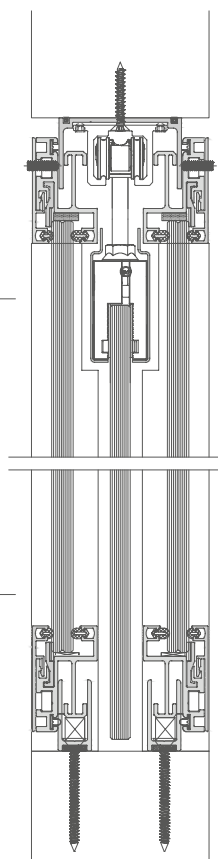
Complete frame(Sliding door)



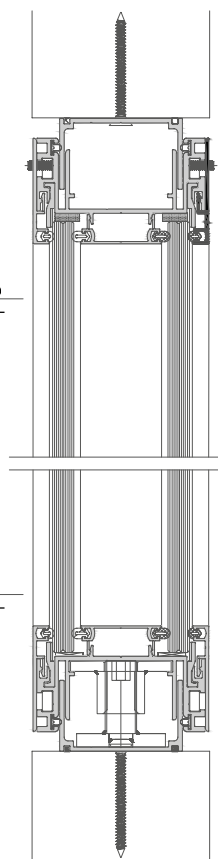
Corner



1 HEAD DOOR

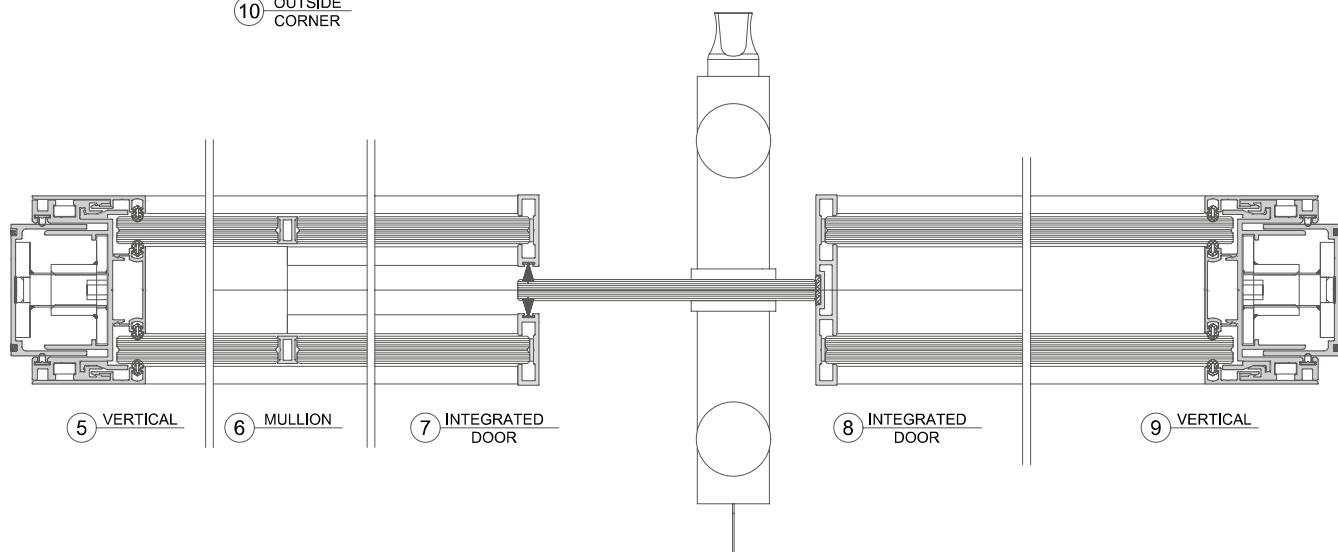


3 HEAD PANEL



2 SILL DOOR

4 SILL PANEL



This data corresponds to the highest values obtained for some configurations. It can vary and may not apply to all.



ES-21

Swing Door

The ES-21 is a Swing door with elegant design. It is a single or double acting operation, Engineered and crafted to deliver ultimate comfort in every aspect: from visual, aesthetic and acoustic.

ES-21

Swing Door

Features:

- Single or double acting operation.
- Pre-assembled door leaf.
- Bolted and welded bracket corners.
- Panic device available.
- ADA thresholds.
- Anodized, painted or wood grain finishes available.

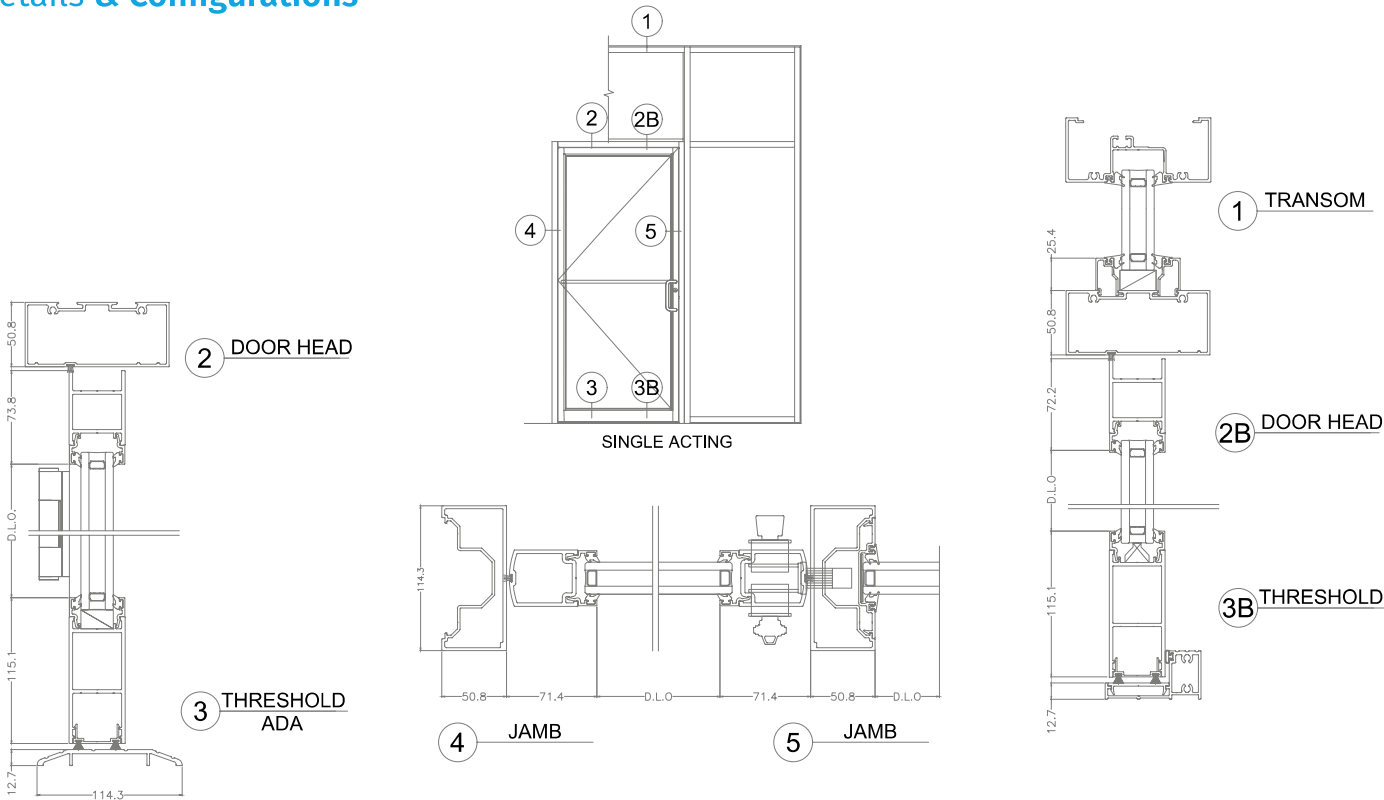


Performance & Highlights

Glazing options	G1: 1/4" temp glass. G2: 1/4" temp glass + 1/2" spacer + 1/4" temp glass
Aluminum	AAMA 2604 Black, AAMA 2604 Bronze Clear Anodized , Black Anodized.
Sizes	ES-21: Width: 42" Height: 96" ES-35: Width: 42" Height: 96" ES-50: Width: 60" Height: 108"
STC	34
Bottom rails	4" - 10"



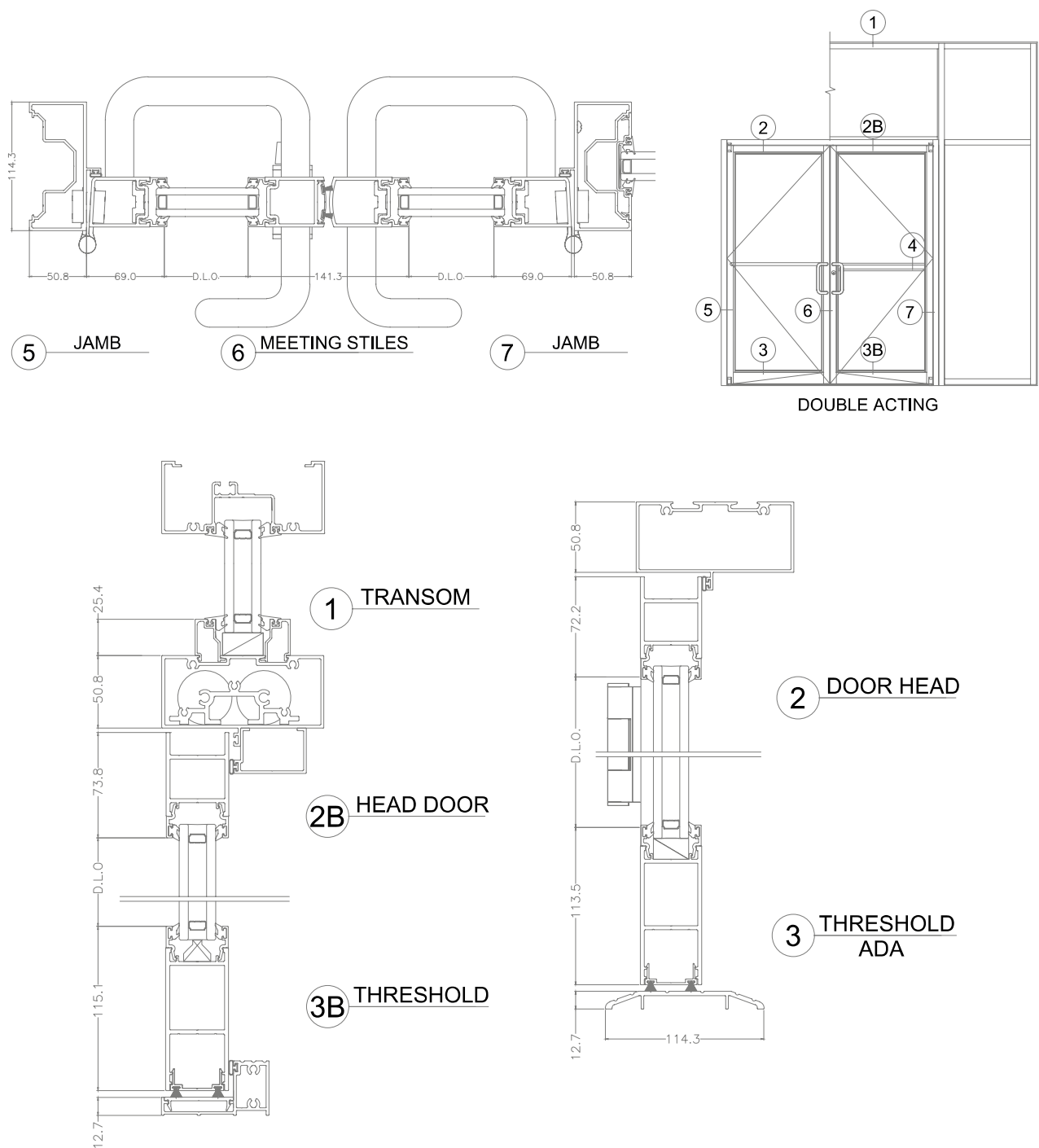
Details & Configurations



This data corresponds to the highest values obtained for some configurations. It can vary and may not apply to all.

ES-21

Swing Door



This data corresponds to the highest values obtained for some configurations. It can vary and may not apply to all.



ES-4520

Storefront

The ES-4520 is a luminous and versatile Storefront with a sophisticated design. It is a thermally broken system. This combination of advanced technology and refined design serves as an architectural canvas, set to elevate any interior space.

ES-4520

Storefront

Features:

- Inside or outside glazed.
- Thermal break or non thermal options.
- Integral door adaptor.
- Screw spline or shear block assembly.
- Corner option available.
- Anodized, painted and wood grain finishes available.

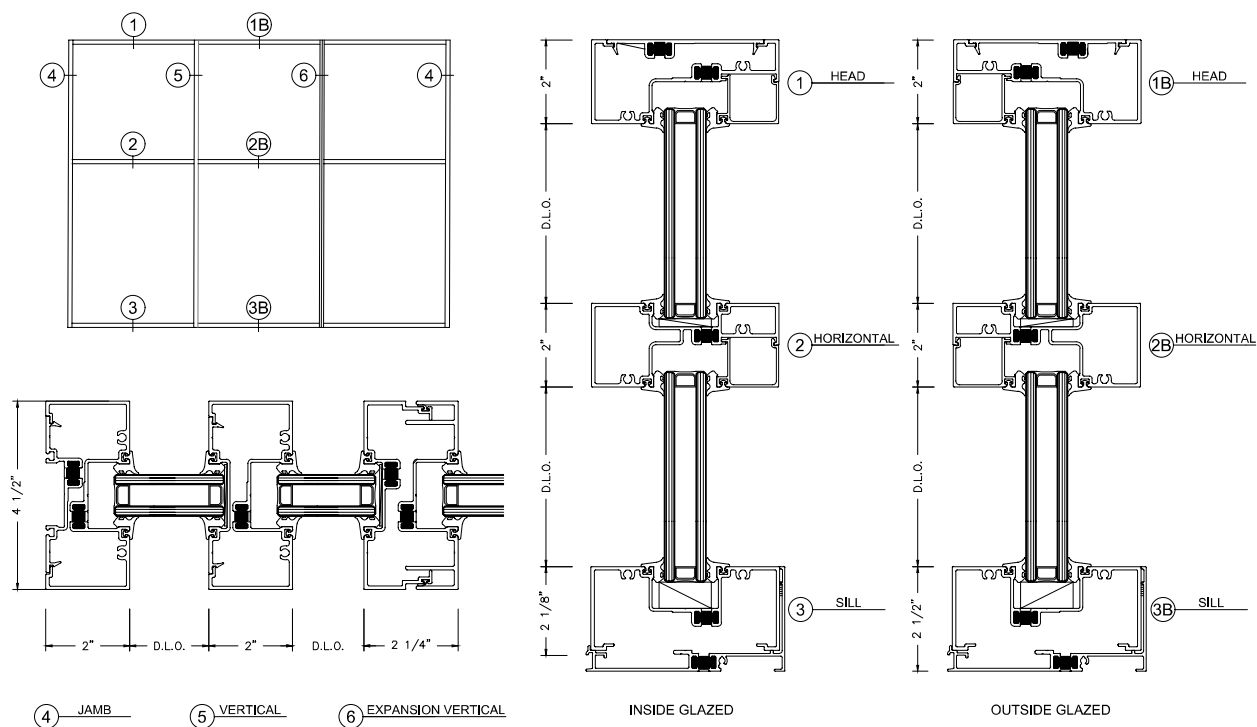


Performance & Highlights

Glazing options	G1: 1/4" Heat stren'd glass + 1/2" Air space+ 1/4" Heat stren'd glass. G2: 1/4" Heat stren'd glass.
Aluminum	AAMA 2604 Black, AAMA 2604 Bronze Clear Anodized , Black Anodized
Sizes	Maximum sizes according to structural calculations.
STC	34



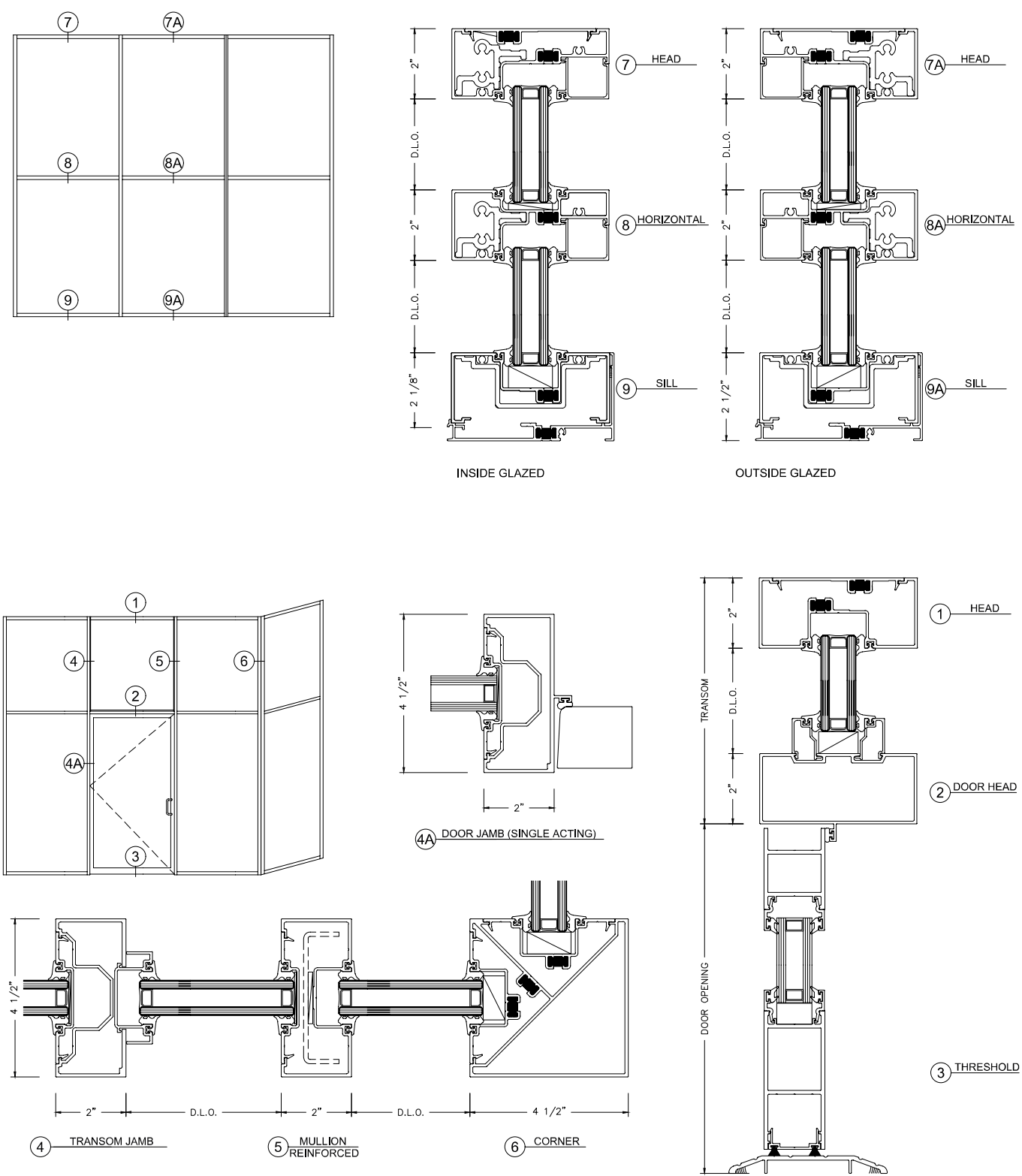
Details & Configurations



This data corresponds to the highest values obtained for some configurations. It can vary and may not apply to all.

ES-4520

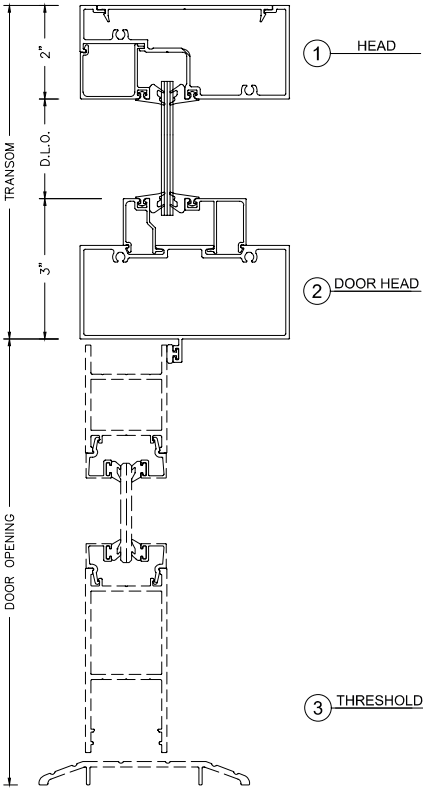
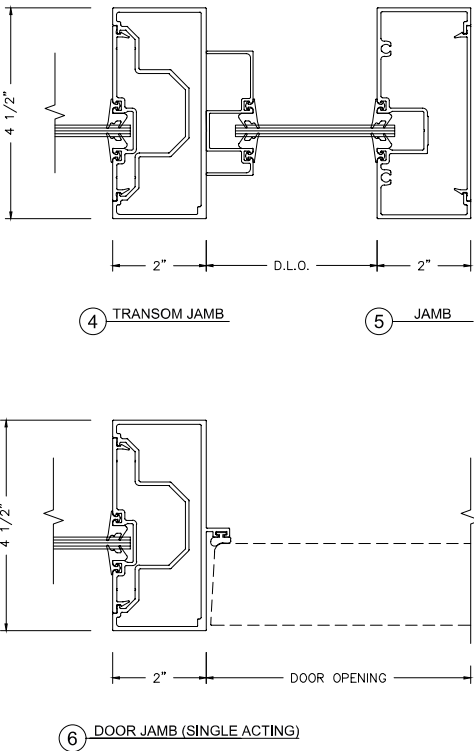
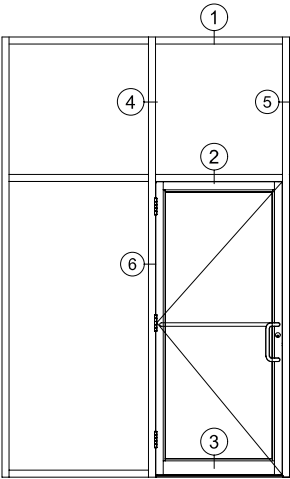
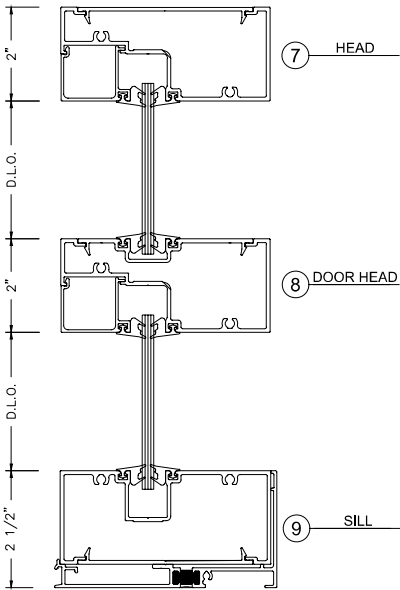
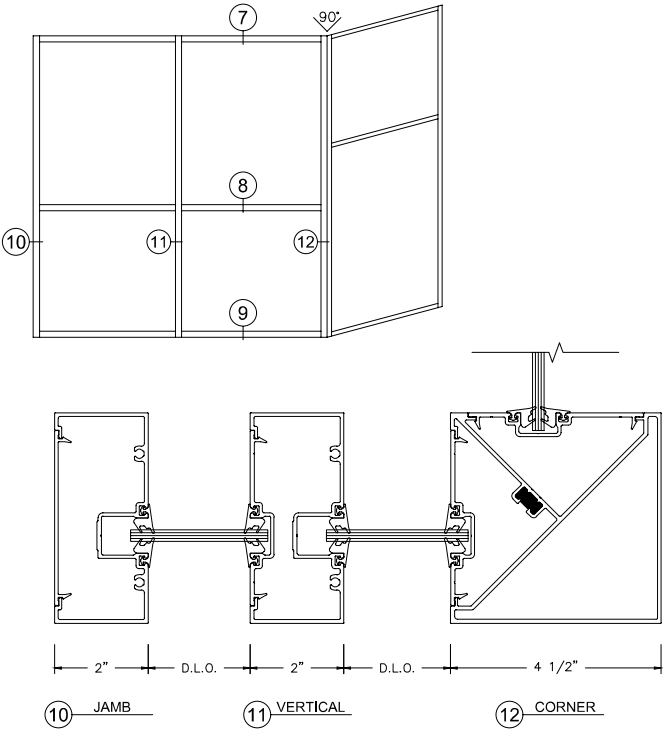
Storefront



This data corresponds to the highest values obtained for some configurations. It can vary and may not apply to all.

ES-4520

Storefront



This data corresponds to the highest values obtained for some configurations. It can vary and may not apply to all.



ES-CD332

Hanging / Sliding Door

Hanging / sliding door system with an upper rail for closets and interior divisions. The design is versatile and it adapts to any space, meeting the most stringent specifications in construction and architectural standards for safety and durability.

ES-CD332

Hanging / Sliding Door

Features:

- Configurations from one to four panels.
- Maximum weight per panel is 143Lb.
- Doesn't required rail or breading floor.
- Wide range of aluminum structure.
- Availability in silk-screen colors, textures and crystal print.

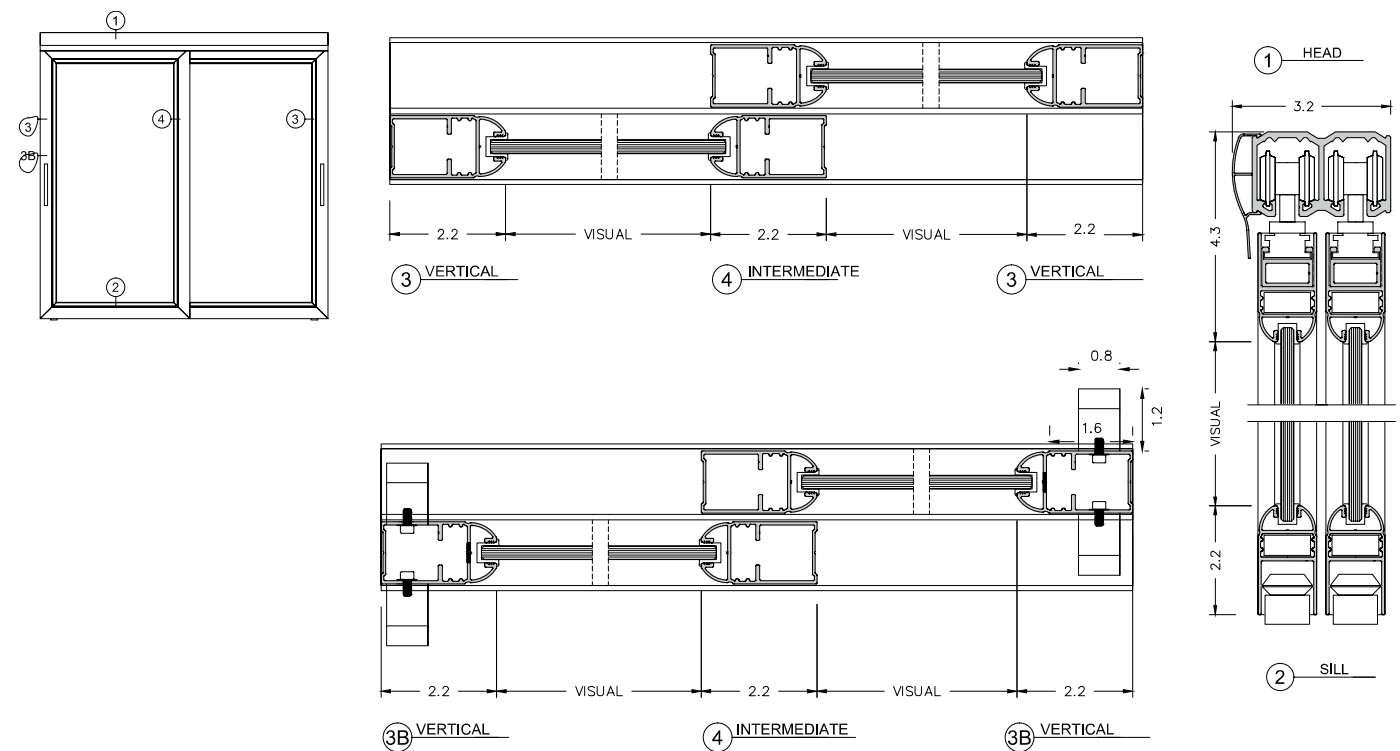


Performance & Highlights

Glazing options	G1: 5/32" Temp glass. G2: 1/8" Temp glass + 0.015 PVB + 1/8" Temp Glass.
Aluminum	AAMA 2604 Black, Bronze, White



Details & Configurations



This data corresponds to the highest values obtained for some configurations. It can vary and may not apply to all.



ES-BF155

Sliding Door

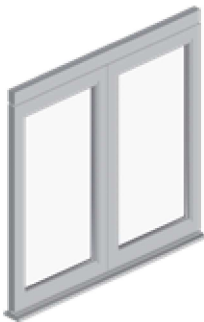
Radiant and flexible internal closet door, perfect for any interior space. Its adaptability allows it to serve multiple purposes.

ES-BF155

Sliding Door

Features:

- Wide range of aluminum structure.
- Availability in silk-screen colors, texture and crystal printing.
- Security system options.
- Painted, serigraphy & digital printed.

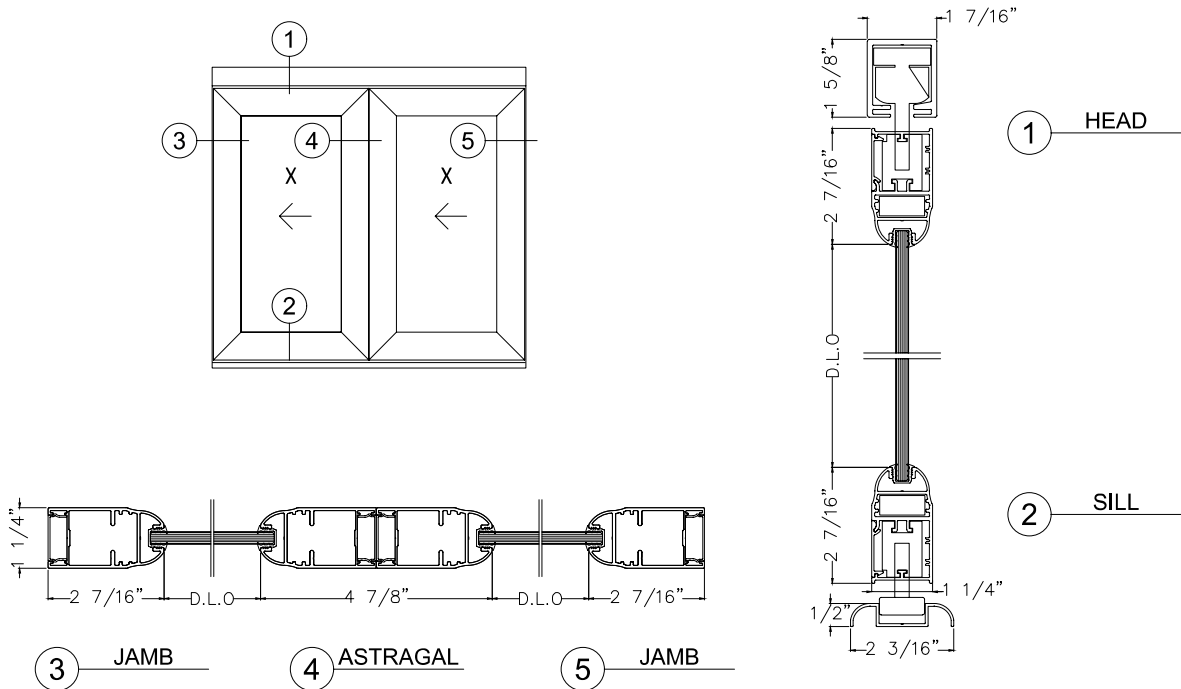


Performance & Highlights

Glazing options	G1: 1/4" Temp glass. G2: 1/8" Temp glass + 0.015 PBV + 1/8" Temp glass.
Aluminum	AAMA 2604 Black, Bronze, White
Sizes	Maximum sizes Width: 157.5" Height: 118" .



Details & Configurations



This data corresponds to the highest values obtained for some configurations. It can vary and may not apply to all.

Color Options



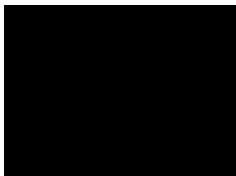
Clear Anodized



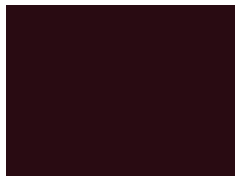
Black Anodized



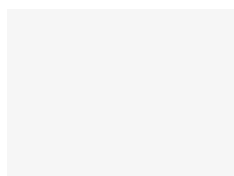
Bronze Anodized



AA2604 Black



AA2604 Bronze



AA2604 White

Hardware Finishes



Silver



Black

Services

Our engineers and designers provide customers with ongoing assistance and technical support to ensure the best solution for every project.

We offer professional guidance to help customers pinpoint and balance their priorities. With this expert assistance, customers can plan and complete projects to achieve maximum benefits.

imagine
extraordinary





ES

imagine
extraordinary